

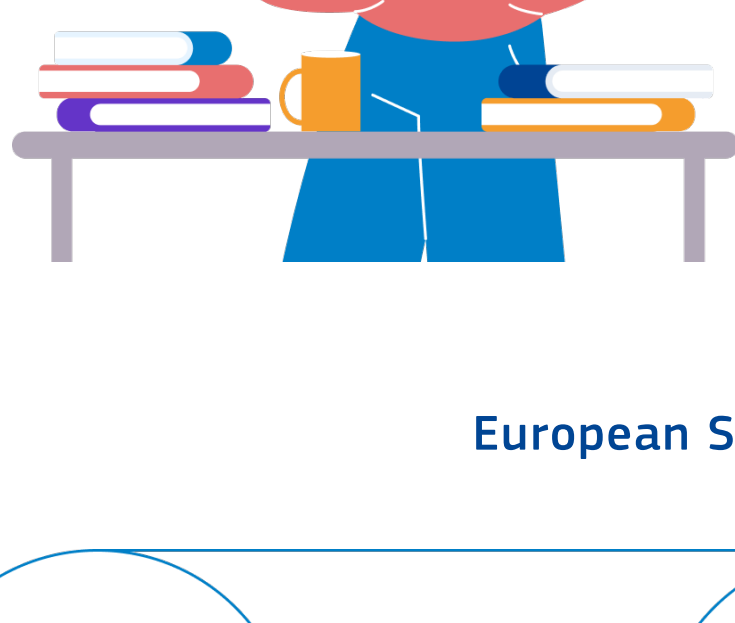
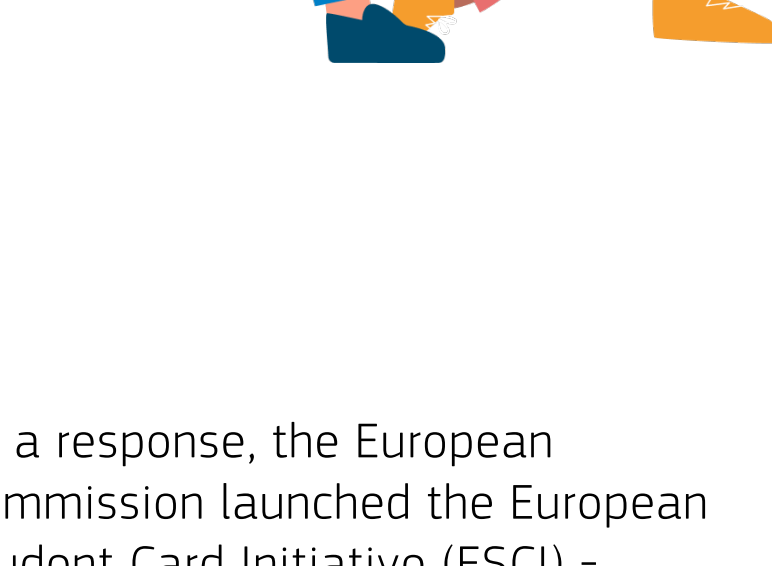


The European Student Card

Simplifying student mobility for students and higher education institutions.

Why would you need the European Student Card?

Student mobility in Europe is in constant development, and so is the need to simplify procedures and to promote **greener and student-friendly alternatives**.



As a response, the European Commission launched the European Student Card Initiative (ESCI) - under the Erasmus+ programme - to promote **simpler, flexible, and easy-to-integrate** solutions for student mobility.

European Student Card Initiative



The European Student Card (ESC) is an important step in...

Promoting a seamless student experience.

Recognising student status across Europe.

Facilitating access to student services.

Streamlining management by card issuers.



Who benefits from the ESC?

For higher education institutions and other card issuers.



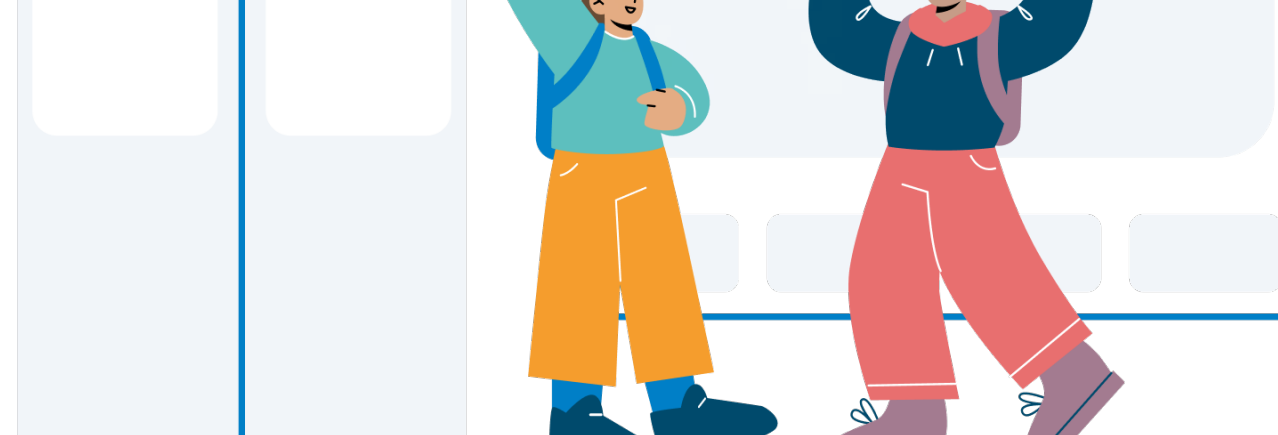
'Easy integration with your current student card'

'Flexible and adaptable to your needs'

Expand your institution's reach and join a European dimension by integrating your current student card with the ESC – a **scalable and interoperable solution**.

The ESC offers a simpler alternative that can evolve with your institution's needs and **enables greener and digital solutions**.

For students



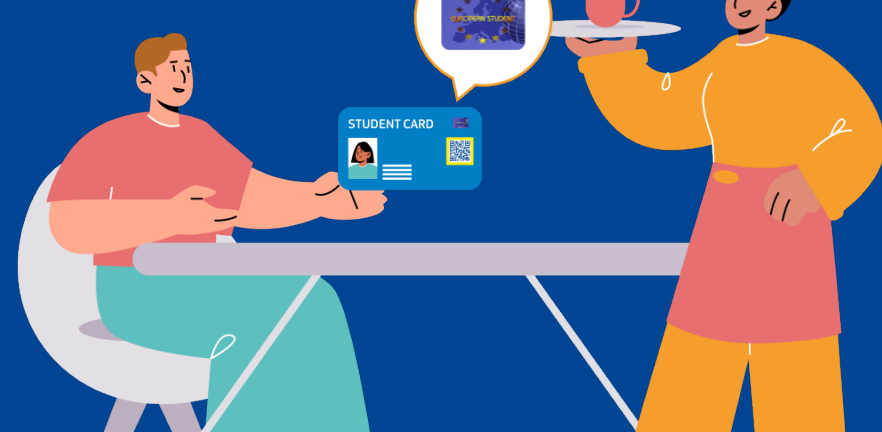
'A gateway for student mobility in Europe'

'The ESC makes your life easier'

The ESC attests of your student status **at home and abroad**.

The ESC **simplifies access** to student services and benefits- discounts, transport, cultural activities and much more.

For on-campus and off-campus service providers



'Streamline your verification processes'

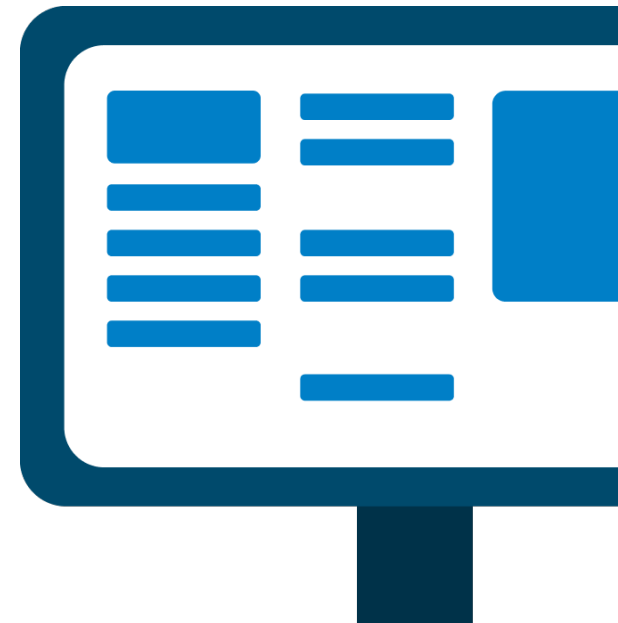
'Increase the reach of your services'

With the ESC you can streamline verification processes, making them **easier, faster, and more convenient for students** to access your services.

Expand the reach of your services with the ESC and **include mobile students** in your portfolio.

What is the ESC-Router?

The ESC-Router is a digital platform that enables secure online validation of the student status **across EU Member States** and third countries associated to the **Erasmus+ programme**.



How does it work?

The **European Student Card can take a digital or physical format**.



The ESC-Router delivers several features to facilitate status verification:

Card Elements

European Student Identifier (ESI)

A digital identifier that enables students to uniquely identify themselves in Europe.

European Student Card Number (ESCN)

A unique card identifier that serves to identify student cards and validate them.



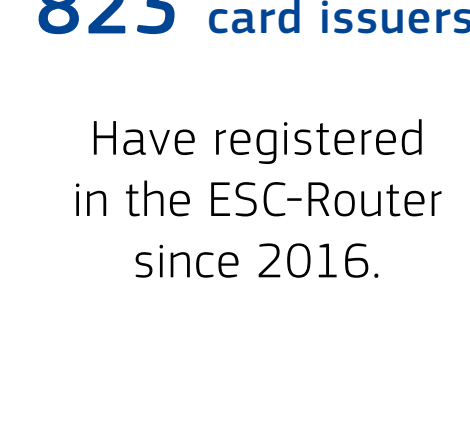
Visual Element

A hologram on the front of the card that certifies the card's authenticity at a European level.

ESC QR code

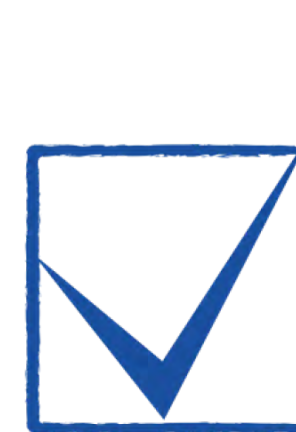
A digital format code on the front and back of the card which certifies the card's validity at a European level.

The ESC so far...



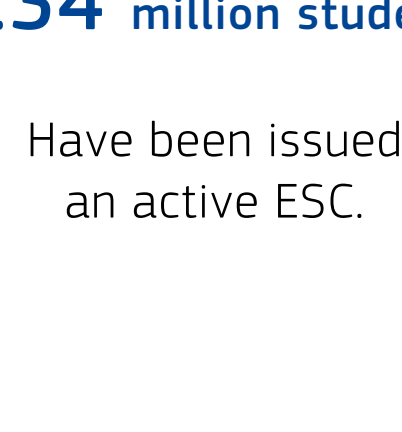
823 card issuers

Have registered in the ESC-Router since 2016.



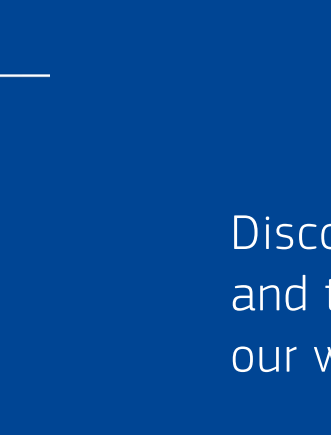
17 countries

Where ESCs are issued.



2.34 million students

Have been issued an active ESC.



*Data from April 2024.

**An active ESC contains both the visual element and the QR code.

Discover the ESC

Discover ESC benefits for student mobility, and the higher education community on our website:

<https://erasmus-plus.ec.europa.eu/european-student-card-initiative/card>

Visit the website

Contact

If you have any questions about the European Student Card, please check our help and support pages.

#EuropeanStudentCard